

NOVEMBER 2011



ALFA Seafood Raffle

ALFA's Annual Seafood Raffle is drawing to a close. Ten winning tickets will be pulled out of a hat on the last day of WhaleFest (November 13th) and winners will be notified. This fundraiser is an important component of ALFA's annual budget, and thanks are due to everyone who has helped make it a success. Special thanks go to the following ALFA members for donating seafood:

*Dick Curran, Jeff Favour,
Walter Pasternak, James &
Patricia Phillips, and
Dewey Torgeson*

Thank you also to Sitka Sound Seafoods and Seafood Producers Cooperative for processing and holding the fish for us in their freezers. The winners LOVE the fish and always comment on the outstanding quality. This is a great way to support ALFA and share our premium seafood!

Halibut Catch Sharing Plan Delay

At the North Pacific Fishery Management Council on September 29th, the National Marine Fisheries Service (NMFS) announced a delay in the review and implementation of the Halibut Catch Sharing Plan (CSP) for Areas 2C and 3A. The stated cause for the delay is substantive issues raised by the over 4,000 comments generated on the proposed rule to implement the CSP, the need for Council clarification of certain CSP components, and the need for updated and additional economic analysis. Senator Begich supported the delay, which is troubling given his oft stated claim that he will never interfere with the scientifically-based fisheries management process.

The primary objection from the charter industry and certain lawmakers to the CSP seems to be that the charter allocation is lower under the CSP than under the GHL at current abundance levels, which should not surprise anyone since deductions for bycatch, sport and subsistence removals do not drop as abundance drops hence what is left for the directed fisheries is proportionally much smaller. The fundamental concept of the CSP is that both commercial and charter sectors share the pain and share the gain of resource abundance fluctuations. Unless charter harvest is reduced proportional to abundance, other harvesters are disproportionately impacted.

**TESTIMONY FROM COMMERCIAL 2C AND 3A QUOTA
SHARE HOLDERS WILL BE ESSENTIAL!!**

Cont. pg. 3

[Click Here to upgrade to
Unlimited Pages and Expanded Features](#)

Gulf of Alaska Halibut Bycatch

During the October Council meeting, NMFS was also able to convince the Council that implementing reductions to the Gulf halibut bycatch caps through the 2012 Harvest Specifications Process was overly problematic, which means no 2012 reductions to halibut bycatch. The Council chose a slower, but potentially longer-lasting route to address trawl and fixed gear (p.cod) bycatch by initiating an amendment that could be in place by 2013. The options for cap reductions are 5, 10 and 15%, which is minimal given the 76% and 44% reductions suffered by directed halibut fishermen in 2C and 3A. Please watch for an action alert on this issue as well—those opposing the action far outnumbered those supporting a reduction in the caps at this meeting.

Many thanks to Jeff Farvour, who stayed in Dutch after the Advisory Panel meeting to testify on this issue, and to Dick Curran and James Swift for submitting written comments.

Our Associate Members~ Thank Them!

Seafood Producers Cooperative ~ Silver Bay Seafoods ~ Sitka Sound Seafoods ~ Murray Pacific
Larkspur Café ~ Hoonah Cold Storage ~ Yakutat Seafoods
ALPS Federal Credit Union ~ Petro Marine Services ~ Spenards Builders Supply
First Bank ~ Fishermen's Eye Gallery ~ Old Harbor Books ~ Wells Fargo

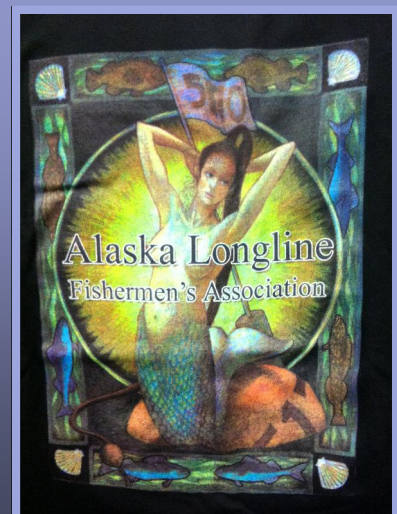
ALFA Merchandise!!

Women's and Long Sleeve t-shirts Now Available

Short Sleeve: \$15 for members ~ \$20 for non-members

Long sleeve: \$20 for members ~ \$25 for non-members

New Colors Coming for WhaleFest ~ Show your ALFA support Every Day of the Week!





Your complimentary use period has ended.
Thank you for using PDF Complete.

[Click Here to upgrade to Unlimited Pages and Expanded Features](#)

nd

As all of you should be aware, the Council has extended its Observer Program to include all Gulf of Alaska groundfish and halibut boats over 40 feet. If federal funding is made available, in

2013 NMFS will: 1) Collect a 1.25% tax on standardized ex-vessel value of ALL halibut and (federal waters) groundfish landings, and 2) Deploy observers on selected vessels down to 40 feet. Because so many small boats cannot accommodate observers, ALFA secured funding from the National Fish and Wildlife Foundation and is working with the Alaska Fisheries Science Center (ASFC) to build a viable electronic monitoring option to on-board human observers. Dan Falvey (F/V Myriad) is running the ALFA portion of this project; Martin Loefflad, who is helping in every way he can, is running the ASFC component. Dan provided a progress report to the Council at the Dutch Harbor meeting that impressed everyone. Because the ASFC has built an observer program based on human observers, there is significant inertia to overcome if cameras are to be accepted as an alternative means of meeting at-sea monitoring requirements. **ALFA, Petersburg Vessel Owner's Association, and the Southeast Alaska Fishermen's Alliance** are all working hard to convince the Council that vessel operators should be allowed to choose between a human observer and a camera, if selected for coverage, but both the Council and NMFS are reluctant to give fishermen the freedom to choose. Our best chance of moving EM toward more general acceptance is to engage as many members of the fleet as we can in this pilot program. If you are willing to participate by allowing us to wire your boat and carry a camera, please contact Dan at (907)738-8710.

And please thank **Dick Curran (F/V Cherokee)** and **Greg Beam (F/V Ida June)** for their participation in the project this year. These two adjusted their fishing schedules to allow time for their boats to be wired with cameras and then took the cameras for a test fishing trip. Thank you!!

DELAY, cont. The Council will recommend 2012 halibut charter management measures at their early December meeting in Anchorage (Dec 5-13). Clearly the Council needs to be reminded of the economic pain caused by the 2C and 3A quota reductions and the necessity of preventing charter overfishing. ALFA will send an action alert prior to the meeting to assist you in writing comments.

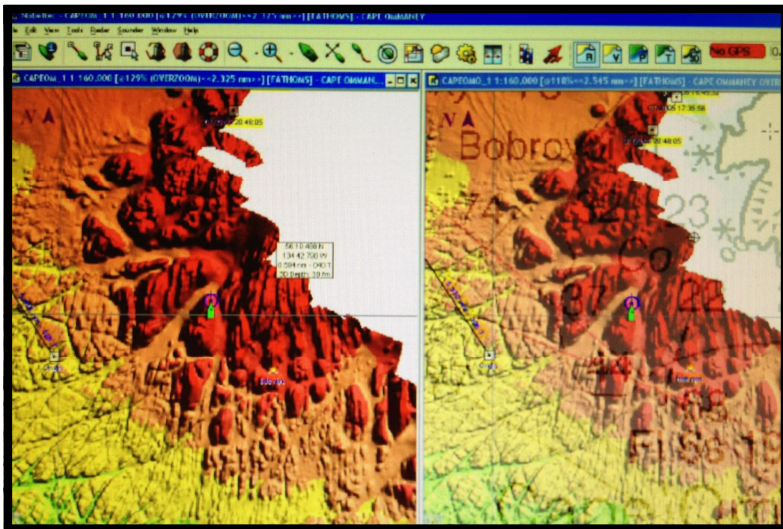
The Council's review of the CSP issues identified by NMFS is tentatively scheduled for February. This review will include the appropriateness of at least the 3A allocation to the charter fleet, if not both 2C and 3A allocations, and the management measures triggered by charter harvest at various levels of abundance. The February Council meeting will be held in Seattle (January 30-Feb 7).



Your complimentary use period has ended. Thank you for using PDF Complete.

[Click Here to upgrade to Unlimited Pages and Expanded Features](#)

Network



ALFA is wrapping up the third year of the rockfish bycatch and bathymetric mapping projects launched as part of the Fishery Conservation Network (FCN). ALFA established the FCN in 2009, thanks to generous funding from the Oak Foundation, with the goal of providing fishermen with the tools and technology to develop and test innovative solutions to marine resource issues. Participating fishermen have provided logbook data on rockfish bycatch

rates in the halibut and sablefish fisheries, which has allowed ALFA to build maps that identify areas with consistently high bycatch rates. The maps give fishermen the necessary tools to control rockfish bycatch. Fishermen participating in the bathymetric mapping component have used Nobeltec software to build detailed and accurate maps of the seafloor in areas they fish; ALFA has combined this data and provided it back to FCN participants so longliners can avoid the rugged areas that concentrate rockfish while still efficiently harvesting halibut and sablefish, and trollers can harvest salmon without hitting pinnacles. If you are interested in joining the FCN, please give us a call or send an email to alfafish@ptialaska.net. We have grant funding to help you upgrade your onboard computer hardware and software to run the bathymetric mapping program, and multi beam sonar charts of areas mapped by NOAA and ADFG that have revolutionized fishing for many FCN members.

FCN boats are also participating in **sperm whale research**, and have started testing devices to deter whales from predating on longline gear. This work engages researchers from Scripps Institute of Oceanography and the University of Alaska, and has been funded with grants from NOAA, the North Pacific Research Board, and the Bering Sea Fishermen's Association (BSFA). Our project partners at BSFA are also concerned about orca whale predation on longline gear, so we are working with them to identify potential deterrents.

A number of FCN participants have asked ALFA to look into **fuel efficiency** so we can help fishermen harvest their catch while burning less fossil fuels and lowering costs. ALFA staff have identified a number of fuel efficiency initiatives and we are in the process of identifying funding to proceed with this work. Stay tuned!

Alaska Southeast Groundfish

[Click Here to upgrade to
Unlimited Pages and Expanded Features](#)

In February 2012, the Board of Fisheries (BOF) will address Southeast groundfish proposals submitted by the public or managing agencies. There are a number of proposals that the Board will address that will directly affect commercial halibut and sablefish fishermen. These include:

Proposal 212: Increase sport allocation of Demersal Shelf Rockfish (DSR) from 16% to 25% by decreasing the commercial allocation from 86% to 75%. This proposal was submitted (for the second time) by the Southeast Alaska Guides Organization (SEAGO). SEAGO argues that the charter sector deserves more rockfish because they have been exceeding their allocation, and commercial fishermen clearly don't need 86% because the commercial allocation has not been fully harvested since 2006. Rewarding the charter sector for overfishing its rockfish quota would be poor management, at best, but the BOF came close to doing just that three years ago when considering the same proposal. Proposers ignore the fact that the commercial fishermen's rockfish bycatch allowance is 10% against halibut on board, and that the 76% reduction in the Southeast halibut quota since 2006 has dramatically reduced the commercial harvesting opportunities for rockfish. Clearly when halibut stocks rebound commercial fishermen will again utilize the full 86% that was allocated based on historic harvest levels. SEAGO proposers also claim that they cannot avoid rockfish, despite ALFA's offer at the last round of BOF meetings to help them set up a Fishery Conservation Network (see article on page 4).

When the BOF challenged both sectors to address rockfish bycatch issues in 2006, ALFA responded by creating the FCN bycatch initiative; the charter fleet responded by overfishing their allocation. Sound familiar???

Cont. page 6

Questions? Comments? Need information, or even help with letter writing?

Come visit the **ALFA office!** We are upstairs in the Sage Building, 834 Lincoln Street.

(907)747-3400



...ent sablefish annual limit. Proposed by charter op-
...his proposal claims that the annual limit established in
2009 was set based on “inflated harvest projections” and that actual numbers (from the self-reported, unverified logbooks) “are much less.” This proposal opens the door for the BOF to adjust sport daily bag, possession and annual limits for sablefish. Websites indicate that more charter operations are targeting sablefish now than were in 2009 and that the use of electric reels to harvest deep water species has increased both in state and federal waters. Because state and federal sablefish fisheries are fully allocated and prosecuted, increased harvest by non-residents will erode commercial allocations or undermine resource health. If you hold sablefish quota share and/or Chatham or Clarence sablefish permits, you should plan to testify or at least send a letter to the BOF on this proposal.

These are just two of the close to 200 proposals that will be addressed by the BOF in Ketchikan between February 24 and March 4th. Comments on these proposals can be sent to the address below and are due to the BOF **before February 10th**. Copies of the BOF proposals can be obtained from ADF&G or from the ALFA office. When you submit comments, please include the proposal number(s) you are addressing, why you support or oppose the proposal, and why the issue is important to you. Please consider attending the BOF meeting to testify. Board members need to hear from you!

ATTN: BOF COMMENTS; Board Support Section; ADFG; PO Box 115526; Juneau AK 99811;
Fax: 907-465-6094



Alaskan's Own Seafood is the first Community Supported Fishery program in Alaska. AO allows subscribers to receive locally harvested fish that is obtained by ALFA's FCN members, and processed through Sitka Sound Seafoods or Seafood Producers Cooperative. The fish is then available for pick up along with information that directly connects the consumer to the FCN fishermen and the conservation work of ALFA. This process provides support for the local market, outreach and education, as well as helping to reduce the carbon footprint of the longline fishery.

Alaskan's Own subscribers have doubled in number since the 2010 inception, with satisfied customers in Sitka and Juneau. Join the FCN today and provide your dining table with locally-caught fresh fish through the 2012 season! www.alaskansown.com

2012 Calendar

...ry changes due (seasons, management actions, etc.)

Nov. 17-19~ Pacific Fish EXPO

Nov. 30~ IPHC– Webcast briefing on stock assessment, staff quota rec's announced (1 p.m.)

Dec. 1~ AMSEA Safety/Drill Conductor Class (Sitka– NSRAA)

Dec. 5-13~ NPFMC Meeting (AP starts 5th/ Council starts 7th) (Anchorage)

Dec. 8~ Regional Planning Team meeting (RTP Sitka)

Dec. 30~ IPHC Catch Limit proposals/comments for 2012

Jan. 23-27~ IPHC Annual Meeting (Anchorage)

Jan. 30– Feb. 7~ NPFMC Meeting (AP starts 30th/ Council 1st) (Seattle)

Feb. 9~ BOF SE & Yak salmon, herring & groundfish comments due

Feb. 13-14~ Young Fishermen's Summit (Juneau)

Feb. 24– Mar. 4~ BOF SE & Yakutat Finfish (Ketchikan)

Mar. 26– Apr. 3~ NPFMC Meeting (AP starts 26th/ Council 28th) (Anchorage)



HANDY CONTACT INFO

Senator Lisa Murkowski
709 Hart Senate Building
Washington, D.C. 20510
Phone: 202-224-6665
Fax: 202-224-5301

Senator Mark Begich
144 Russell Senate Office Building
Washington DC 20510
Phone: 202-224-3004
Fax: 202-224-2354

Congressman Don Young
2314 Rayburn House Office Building
Washington, DC 20515
Phone: 202-225-5765

Miso-Glazed Halibut:

2 T. yellow or white miso (fermented soybean paste)
2 T. mirin
1 T. light soy sauce
1 T. firmly-packed golden brown sugar
1/2 tsp. peeled, finely-grated fresh ginger
4 **Alaskan** Halibut steaks or fillets (4 to 6 oz. each)
1 T. olive oil
2 tsp. lightly toasted sesame seeds

Heat oven to 400°F. In small bowl whisk together miso, mirin, soy sauce, brown sugar and ginger until well blended; set aside.

Heat an oven-safe skillet over medium-high heat. Rinse fish under cold water; pat dry. Brush both sides of halibut with oil. Place halibut in heated skillet and cook, uncovered, about 4 minutes, until browned. Turn halibut over and sear the other side, about 2 minutes. Transfer skillet to the oven; bake fish 5 minutes then brush with miso glaze. Bake an additional 6 to 9 minutes for frozen halibut or 2 to 5 minutes for fresh/thawed fish. Cook just until fish is opaque throughout.

Recipe from <http://recipes.alaskaseafood.org>



Your complimentary use period has ended. Thank you for using PDF Complete.

ne

N

TO:

Click Here to upgrade to Unlimited Pages and Expanded Features

Linda Behnken, Executive Director
Box 1229
834 Lincoln Street, Room 23
Sitka, Alaska 99835

Phone: 907-747-3400
Fax: 907-747-3462
E-mail: alfa.staff@gmail.com
Web: www.alfafish.org



Rebecca Poulson, Linda Behnken, Nancy Behnken and Laura Schmidt pause for a candid shot.



Jeff Favour pulls one on board.

Time to Renew Your Membership! Current Membership Information

Dues are on a calendar year basis January 1—December 31

Deckhand: \$100 ___ Basic: \$250 ___ Supporting: \$600 ___

Highliner: \$1,000 or more _____

Name: _____ Vessel: _____

Address: _____

Email: _____ Phone/Cell: _____

T-SHIRTS: Men's SM-XXXL, dark green, brown, black, and dark blue, Women's S-XL, green, white, brown, and blue. Long sleeve style also available

Short Sleeve: \$15/ members, \$20/non-members; Long Sleeve: \$20/members, \$25/non-members

Qty: _____ Size: _____ Men's or Women's _____ Color: _____ S/S or L/S: _____

Qty: _____ Size: _____ Men's or Women's _____ Color: _____ S/S or L/S: _____

HATS: Cotton—dark green or black \$15/members, \$20/non-members;

Qty: _____ Color: _____